



Limanowskiego 6/21, 30-534 Krakow



+48 515 322608, +48 606 363000



info@gmlsystem.pl



www.se.gmlsystem.eu

Översikt över ståltrappor: spiraltrappor, svängda trappor, raka trappor

This overview contains proposals of steel stairs taken from our real life realizations and has been created to facilitate selection process as an addition to our offer presented in the gallery for stairs.

The solutions presented are grouped depending on the type of stairs:

1. spiral stairs,
2. winder stairs,
3. cheek stairs

Limanowskiego 6/21, 30-534 Krakow



+48 515 322608, +48 606 363000



info@gmlsystem.pl



www.se.gmlsystem.eu



Spiraltrappor

Trappor med konstruktion av rostfria profiler, steg och vilplan av gallerduk/ aluminiumplåt/ trä och stålräcke



Limanowskiego 6/21, 30-534 Krakow



GML System
stål och glas konstruktioner

+48 515 322608, +48 606 363000



info@gmlsystem.pl

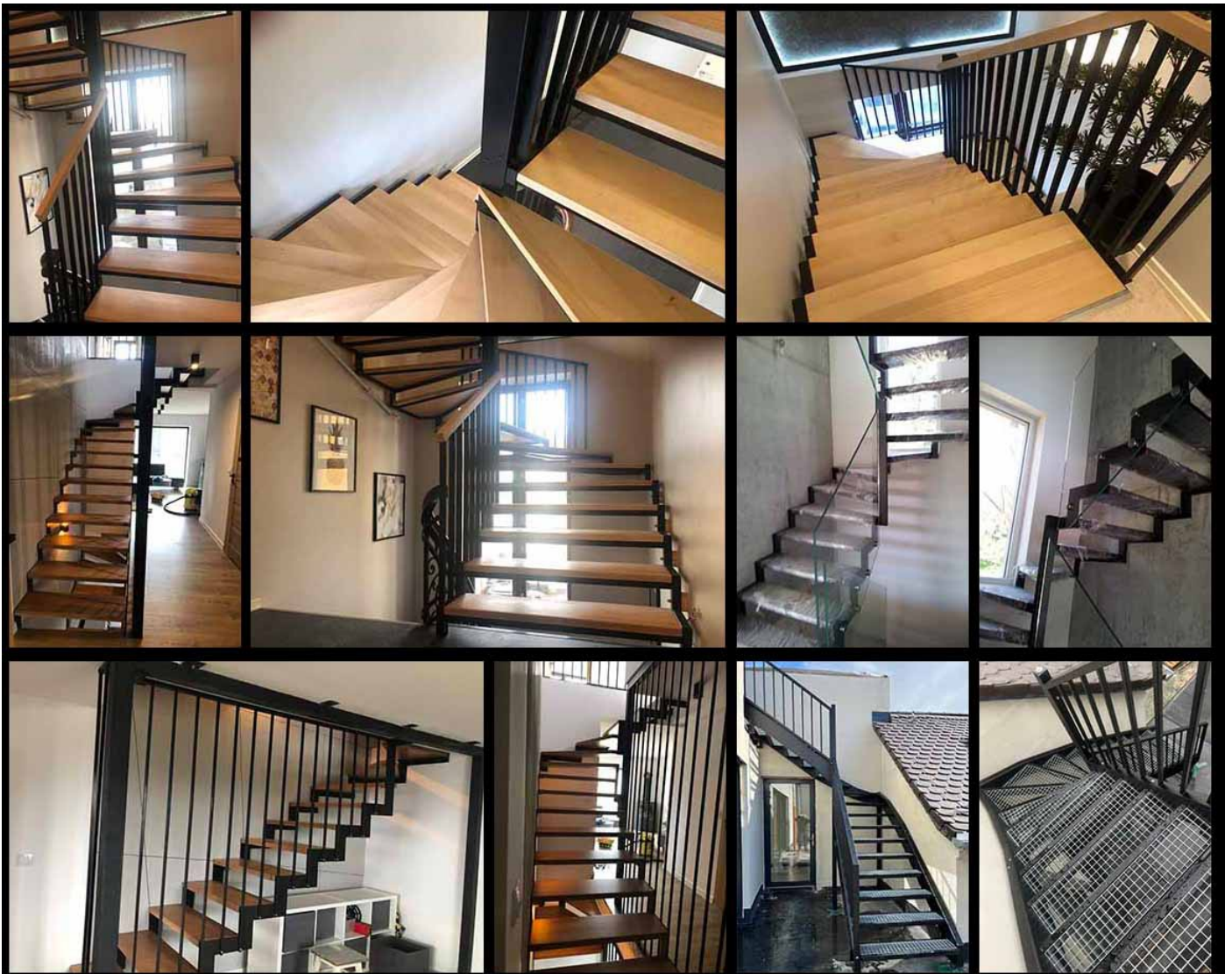


www.se.gmlsystem.eu



Svängda trappor

Trappor med konstruktion av stålprofiler, steg av trä/ glas och stålräcke/ glasräcke



Limanowskiego 6/21, 30-534 Krakow



+48 515 322608, +48 606 363000



info@gmlsystem.pl

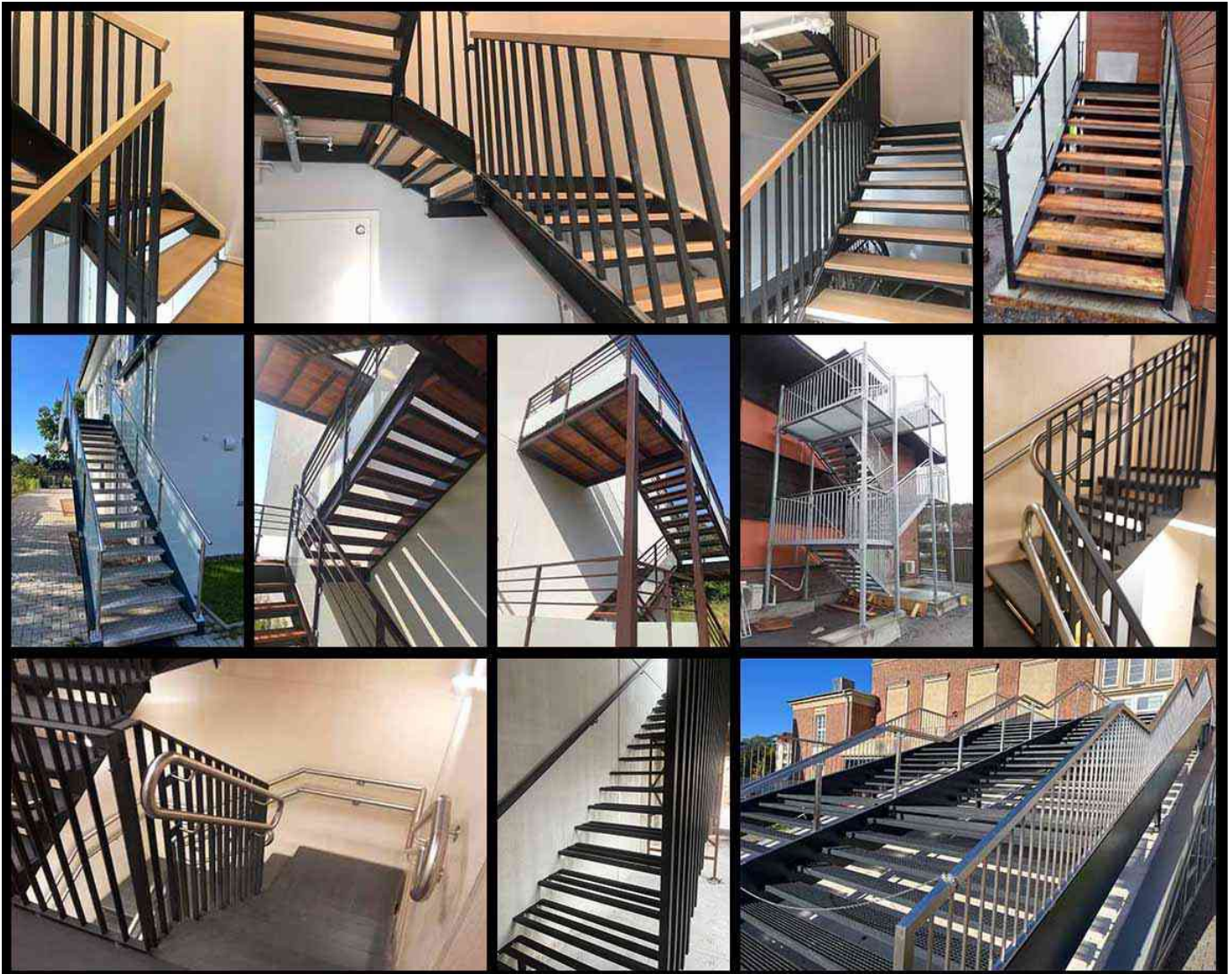


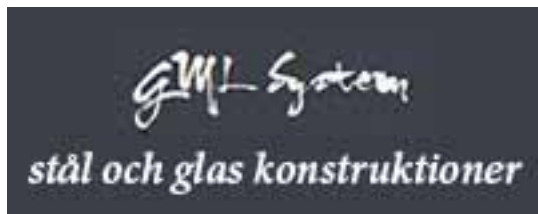
www.se.gmlsystem.eu



Raka trappor

Trappor med konstruktion av stålprofiler, steg och vilplan av trä/ gallerdurk/ stålplåt och stålräcke/ glasträcke





Limanowskiego 6/21, 30-534 Krakow



+48 515 322608, +48 606 363000



info@gmlsystem.pl



www.se.gmlsystem.eu

Our Services

We offer the following services:

1. Free advise - just call if you wish to discuss an idea or potential project.
2. Guidance on all aspects of product selection.

Our web site has been designed to assist you in the selection process. It contains a catalogue of construction types in the form of photo galleries with sample solutions taken from our real life projects as well as presentation of sample projects organized in offers for different target groups: home owner, business owner and developer.

3. Free of charge cost estimate based on provided by you quantity survey.
4. Design - we act in all ways to ensure that your construction is designed to meet your needs precisely.
5. Manufacture in our workshop.
6. Supply to your location.
7. On site installation service, if required.